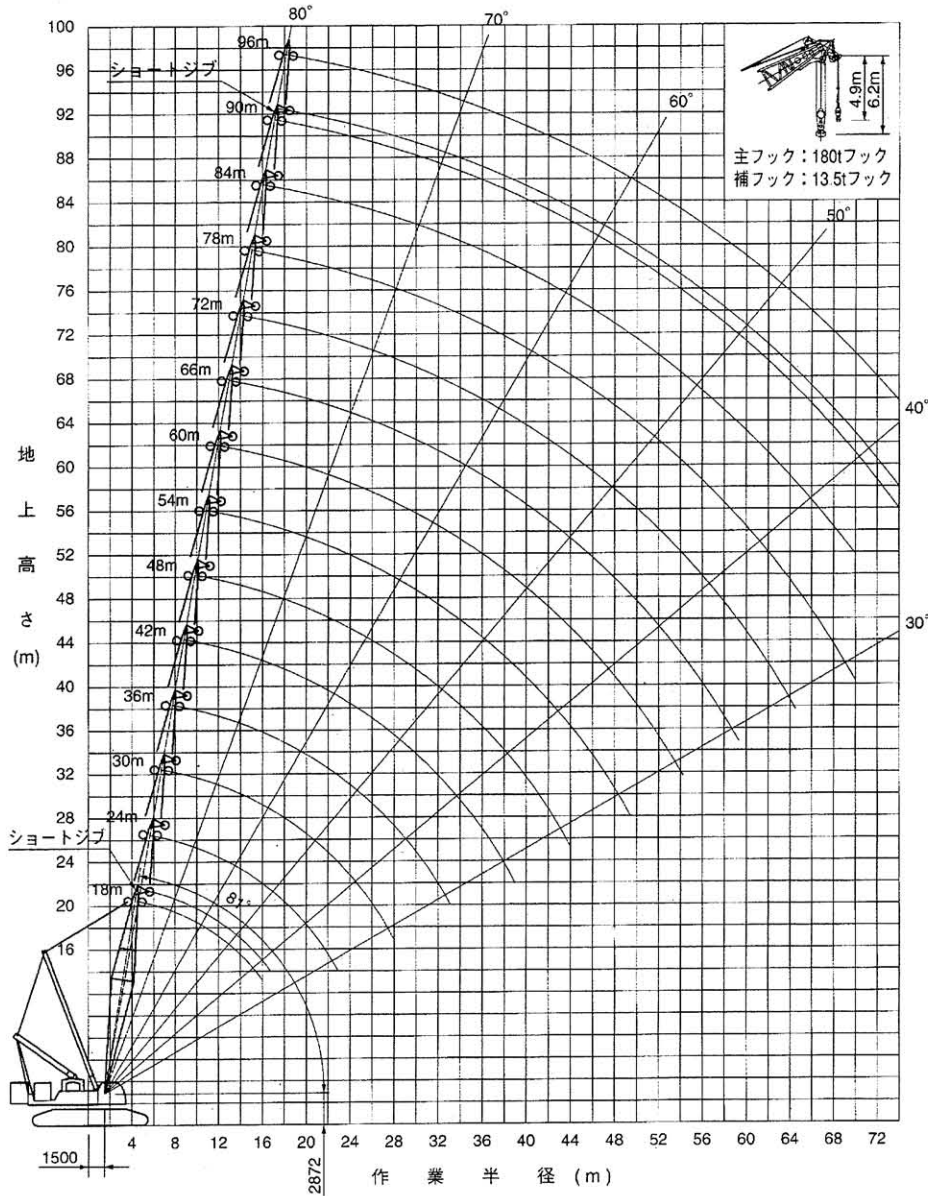


SC3500

350t



●350t トップブーム定格総荷重表【クレーン主フック(ハンガー無し)】

作業半径 (m)	主ブーム長さ (m)														作業半径 (m)		
	18	24	30	36	42	48	54	60	66	72	78	84	90	96			
5.0	180.0																5.0
6.0	180.0	180.0/6.4															6.0
7.0	180.0	180.0	180.0/7.4														7.0
8.0	180.0/8.7	180.0	180.0	160.0/8.5													8.0
9.0	172.4	180.0/9.6	180.0/9.5	160.0/9.5	169.0/9.5												9.0
10.0	150.1	169.4	169.4	169.4	168.0	131.9/10.6	130.8/11.6										10.0
12.0	115.8	131.8	136.9	137.9	137.6	131.8	130.8	106.1/12.7	104.4/13.7								12.0
14.0	92.3	106.4	110.0	110.0	109.7	109.6	109.3	105.1	104.0	79.3/14.7	67.5/15.6						14.0
16.0	71.4	88.3	91.2	91.2	90.7	90.6	90.4	89.8	85.7	76.6	67.4	54.0/16.8	48.9/17.9				16.0
18.0		74.5	77.6	77.4	77.0	76.9	76.6	76.0	75.5	72.4	66.4	54.0	46.8	38.9/18.9			18.0
20.0		63.5	67.3	67.1	66.6	66.5	66.1	65.5	65.0	64.6	61.3	52.8	45.7	38.3			20.0
22.0		54.5	59.3	59.0	58.4	58.3	58.0	57.4	56.8	56.3	55.6	49.0	42.2	37.3			22.0
24.0		51.8/22.8	52.8	52.4	52.0	51.7	51.4	50.8	50.2	49.7	49.3	45.4	39.6	34.6			24.0
26.0			47.5	47.2	46.6	46.4	46.0	45.4	44.8	44.3	43.8	42.1	37.2	32.4			26.0
28.0			42.4/27.8	42.7	42.0	41.9	41.4	40.8	40.2	39.7	39.2	38.9	34.9	30.4			28.0
30.0				39.0	38.3	38.0	37.6	37.0	36.4	35.9	35.4	34.9	32.6	29.7			30.0
34.0				33.7/33.0	32.2	32.0	31.4	30.8	30.1	29.6	29.2	28.7	28.3	25.0			34.0
38.0					27.6	27.4	26.8	26.0	25.4	24.8	24.4	23.9	23.5	21.5			38.0
42.0					27.4/38.2	23.9	23.0	22.3	21.7	21.1	20.6	20.2	19.7	18.7			42.0
46.0						22.7/43.4	20.2	19.4	18.7	18.1	17.5	17.0	16.6	16.1			46.0
50.0							18.1/46.6	16.9	16.2	15.6	15.0	14.5	14.0	13.4			50.0
54.0								14.9/53.8	14.2	13.6	13.0	12.4	12.0	11.4			54.0
58.0									12.5	11.8	11.2	10.6	10.1	9.5			58.0
62.0										12.0/59.0	10.2	9.6	9.0	8.5	7.9		62.0
66.0											9.2/64.2	8.3	7.3	7.2	6.2		66.0
70.0												7.2/69.3	6.0	6.0	4.8		70.0
74.0													4.9	3.4			74.0